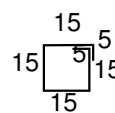
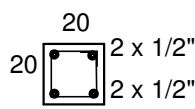


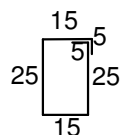
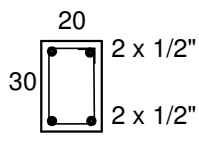
PILARES - PG01 a PG04 - Escala: 1/25



ESTRIBOS

Espaçamento= 13cm
Fe ø 5mm
Comprimento= 70cm

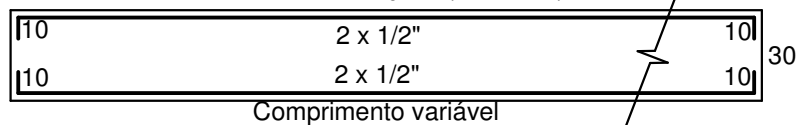
VIGA DE FUNDAÇÃO - VF2 - Escala: 1/25



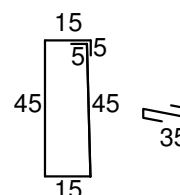
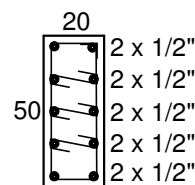
ESTRIBOS

Espaçamento= 20cm
Fe ø 5,0mm
Comprimento= 90cm

VIGA DE FUNDAÇÃO (20x30cm)



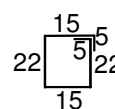
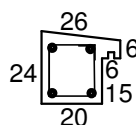
PILARES - PG05 e P06 - Escala: 1/25



ESTRIBOS

Espaçamento= 13cm
Fe ø 5mm
Comprimento= 130cm

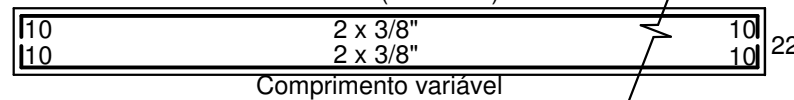
VIGA CINTA - VC - Escala: 1/25



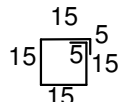
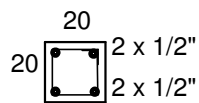
ESTRIBOS

Espaçamento= 20cm
Fe ø 5,0mm
Comprimento= 84cm

VIGA CINTA (20x25cm)



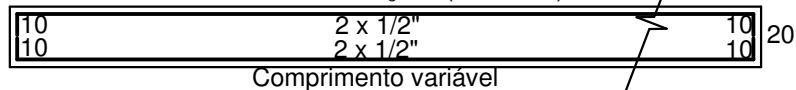
VIGA DE FUNDAÇÃO - VF - Escala: 1/25



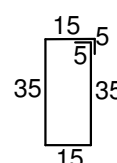
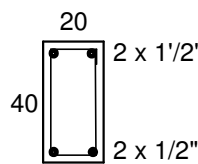
ESTRIBOS

Espaçamento= 20cm
Fe ø 5,0mm
Comprimento= 70cm

VIGA DE FUNDAÇÃO (20x20cm)



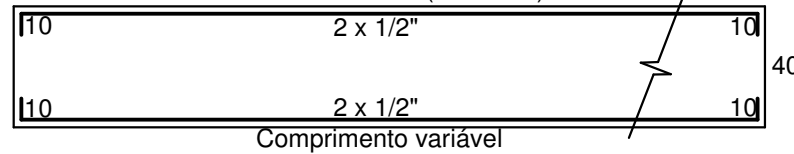
VIGA PÓRTICO - VP - Escala: 1/25



ESTRIBOS

Espaçamento= 20cm
Fe ø 5,0mm
Comprimento= 110cm

VIGA DO PÓRTICO (20x40cm)



PREFEITURA MUNICIPAL
DE PORTÃO

OBRA: PÓRTICO FUNDOS EMEF EDMUNDO KERN

ENDEREÇO: RUA ESTÂNCIA VELHA, 542 | PORTÃO

CONTEÚDO:
DETALHAMENTO VIGAS,
FUNDAÇÃO e PILARES

ESCALA: INDICADA
DATA: OUT / 2017
ÁREA: DESENHO:
TAIANA

PRANCHA:
E3